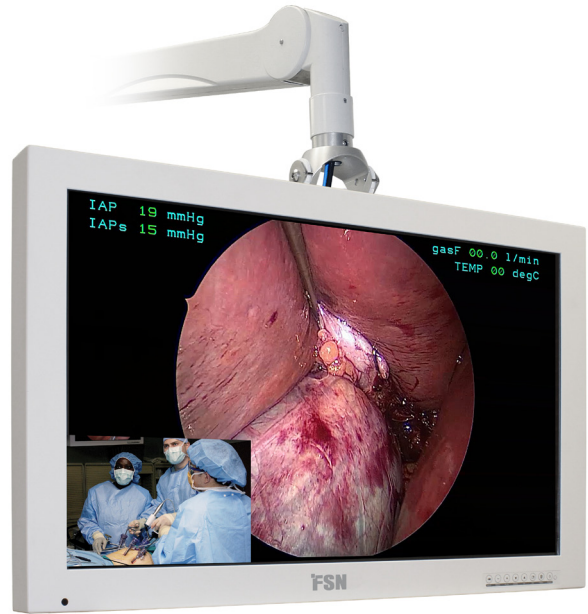


32" High-Bright LED Medical Display

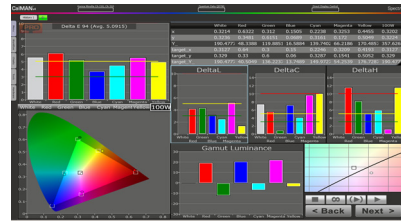
FSN monitors are designed to reproduce multi-modality imaging, using an extensive selection of input connections, and comprehensive signal timing tables. Picture-in-picture or picture-by-picture screen layouts can be fully adjusted for size and position, giving surgeons the flexibility to work with video images tailored to their preference. FSN display monitors are designed without an internal fan. This eliminates the spread of contaminants and makes the monitor better suited for the sterile field in an operating room.

- Displays live medical video signals at peak resolution
- Image control includes size, position, over scan, zoom, pan, freeze
- Artifact-free images for confident decision making during surgery
- Conforms to Electromagnetic Directive 2004/108/EC and 93/42/EEC
- Compatible with analog or digital video sources
- A high-end visualization system with in-service dependability
- Reduce cable clutter with the back cover plate

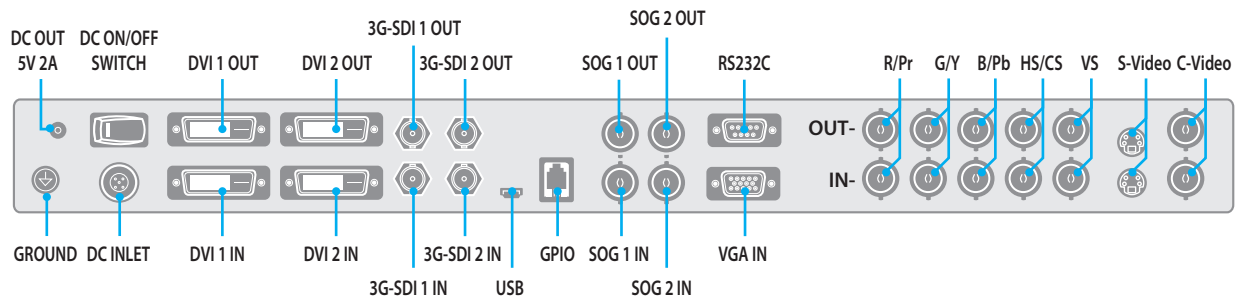


FSN's 32" LED display features expanded I/O options, including dual DVI and SDI, plus DC out power for smaller components. FS-L3202D is ideal for showing big images, yet is still within the size range recommended by most OR boom arm systems. A handheld remote control is included.

Accurate Color Reproduction



FSN has implemented methods to fine-tune the properties of our displays. Distinct color space settings have been calibrated to well-known surgical color preferences.



FSN displays have the connections you need. All major inputs are accepted via the back side connection panel.

Specifications

General Features

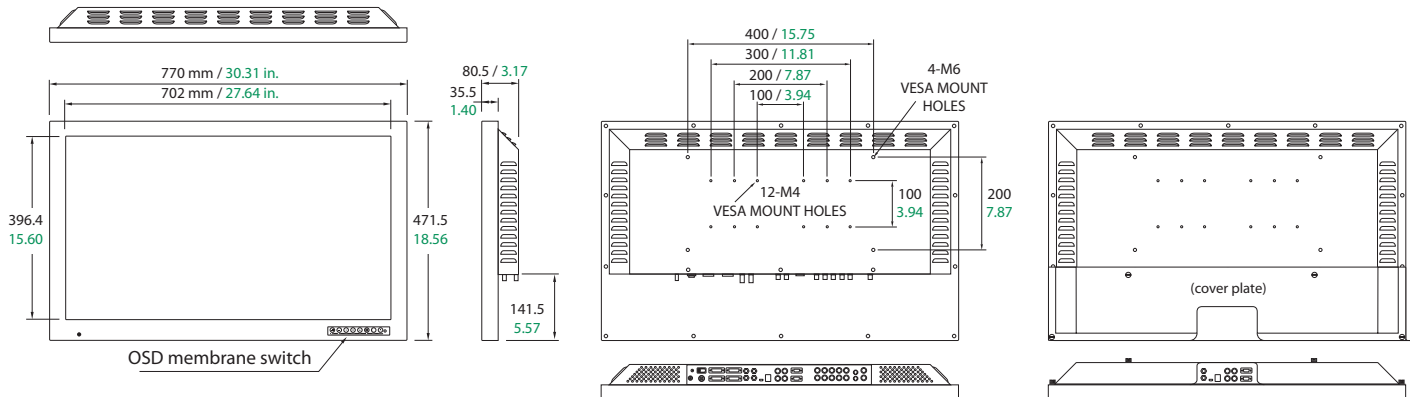
Item	Description
Panel	32 inch TFT LCD (IPS)
Resolution	1920 x 1080 pixel
Aspect Ratio	16 : 9
Active Area	698.4(W) X 392.9(H) (mm)
Input Signal	2 x DVI-D 2 x SD/HD/3G-SDI (BNC) 2 x SOG 1 x VGA (D-sub) 1 x C-Video (BNC) 1 x S-Video (DIN) 1 x Component (RGBS, YPbPr) (5 x BNC)
Output Signal	2 x DVI-D 2 x SD/HD/3G-SDI (BNC) 2 x SOG 1 x C-Video (BNC) 1 x S-Video (DIN) 1 x Component (RGBS, YPbPr) (5 x BNC)
GPIO Port	Swap, PIP / PBP1 / PBP2 Select, Record indicator
External Control	RS232 control, Remote control
Power Supply	AC/DC Adaptor (AC 100-240V~, DC 24V 6.25A)
Control Key	Power, Menu, PIP, Up, Down, Plus, Minus, Input
Unit Dimension	770 (W) x 471.5 (H) x 80.5 (D) mm 30.32 (W) x 18.56 (H) x 3.17 (D) inch
Weight	12.8 Kg, 28.2 lbs
Pixel Pitch	0.27 (W) x 0.27 (H)
Contrast Ratio	1300 : 1 typical
Viewing Angle (CR>10)	R/L 178, U/D 178
Response Time (G-to-G)	22 ms (avg.)
Surface Luminance	450 (5 points avg.) cd/m2

Output Signal Timing

Signal	Type	Description
Component Video	Type	Analog Y/G, Pb/B, Pr/R
	Connector	BNC
	Level	0.7Vp-p ±5% (1.0Vp-p for sync embedded G/Y)
	Polarity	Positive
	Impedance	75 ohm ±5%
	Horizontal frequency	30 ~ 93KHz
	Vertical frequency	50 ~ 85Hz
	Applicable max. pixel frequency	170MHz
	Maximum resolution	1920x1080 / 60Hz (148.5MHz Timing, NON-CRT)
	Component Sync	Type
Level		TTL Level (V high ≥2.0V, V low ≤0.8V)
Polarity		Positive or Negative
Connector		BNC
SOG	Type	Sync on green
	Level	0.7Vp-p ±5%
	Impedance	75 ohm ±5%
DVI	Max. resolution	1920x1080 / 60Hz (148.5MHz Timing, NON-CRT)
	Connector	BNC
	Type	Digital RGB
C-Video	Signal Format	TMDS single link
	Connector	DVI-D
	Type	C-Video
S-Video	Color system	NTSC, PAL
	Connector	BNC
	Type	S-Video
SDI	Color system	NTSC, PAL
	Connector	mini-DIN
	Type	SMPTE-424M 1080p SMPTE-292M 720p, 1080i SMPTE-259M 480i, 576i

Input Signal Timing

Signal	Type	Description
VGA, Component Video	Type	Analog RGB, Analog YPbPr
	Connector	DSUB-15 (VGA), BNS(Component)
	Level	0.7Vp-p ±5% (1.0Vp-p for sync embedded G/Y)
	Polarity	Positive
	Impedance	75 ohm ±5%
	Horiz. frequency	30 ~ 93KHz
	Vertical frequency	50 ~ 85Hz
	Applicable max. pixel frequency	170MHz
	Max. resolution	1920x1080 / 60Hz (148.5MHz Timing, NON-CRT)
	Type	Separate H/V Sync, Composite Sync. Automatic synchronization without external switch
VGA, Component Sync	Level	TTL Level (V high ≥2.0V, V low ≤0.8V)
	Polarity	Positive or Negative
	Range	Automatic synchronization for applicable resolution modes which follows industrial standard within frequency range of 30 to 93KHz in horizontal and 50 to 85Hz in vertical
	Terminal resistance	more than 2KΩ
SOG	Type	Sync on green
	Level	0.7Vp-p ±5%
	Impedance	75 ohm ±5%
	Maximum resolution	1920x1080 / 60Hz (148.5MHz Timing, NON-CRT)
DVI	Connector	BNC
	Type	Digital RGB
	Signal Format	TMDS single link
C-Video	Connector	DVI-D
	Type	Analog Composite Video
	Color system	NTSC, PAL
S-Video	Connector	BNC
	Type	Analog Y/C Separated Video
	Color system	NTSC, PAL
SDI	Connector	mini-DIN
	Type	SMPTE-424M 1080p SMPTE-292M 720p, 1080i SMPTE-259M 480i, 576i



Specifications are subject to change with or without notice. Doc. # FSN1955 Rev. 9/15

www.fsnmed.com

Foreeseon Custom Displays, Inc.
2210 E. Winston Road
Anaheim, CA 92806 USA
Tel: 714-300-0540
Fax: 714-300-0546

San Jose, CA Tel: 714-507-3851
Fort Lee, NJ Tel: 714-507-3852
Atlanta, GA Tel: 714-507-3855
Orlando, FL Tel: 714-507-3853

Foreeseon Korea
404B, PangyoInnovallley B
253 Pangyo-ro
Bundang-gu Seongnam-si
Gyeonggi-do, Korea 463-400
Tel: +82-31-8018-0780
Fax: +82-31-8018-0786

Foreeseon GmbH
Industriestrasse 38a
63150 Heusenstamm, Germany
Tel: +49 6104 64398 0
Fax: +49 6104 64398 11

Foreeseon UK Ltd.
Unit 71 Barwell Business Park
Leatherhead Road
Chessington, Surrey KT9 2NY
Tel: +44 (0) 208 546 1047

Foreeseon (Shanghai)
Medical Equipment Co., Ltd.
Room 307, 3F
No. 56, 461 Hongcao Road
Gaohejing Development District
Xuhui, Shanghai 200233
Tel: 86-21-6113-4188