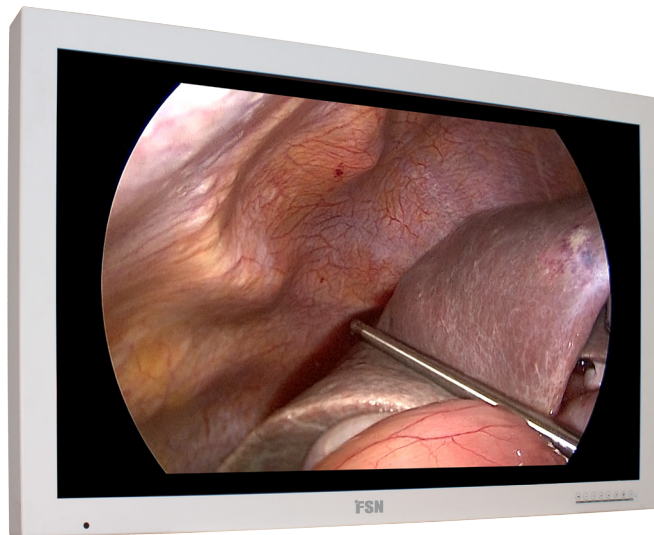


## 55" HD Medical Display



FSN Medical Technologies has solutions for managing your operating room video signals. Our products are engineered and built for compatibility with other highly specialized surgical and diagnostic equipment used in surgical suites, operating rooms, emergency rooms, and procedural facilities. FS-L5501D, our 55" medical display, is uniquely equipped to handle tasks in the demanding OR environment.

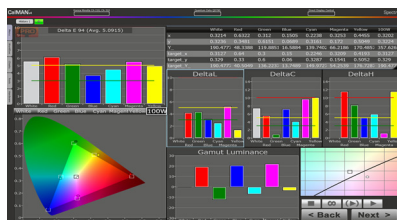
- Rapid signal detection, robust mode tables
- Artifact-free HD images
- Fanless - sterile field compatible
- Built to last, rugged aluminum housing
- Calibrated to clinical color
- Image pan, zoom, freeze, picture-in-picture



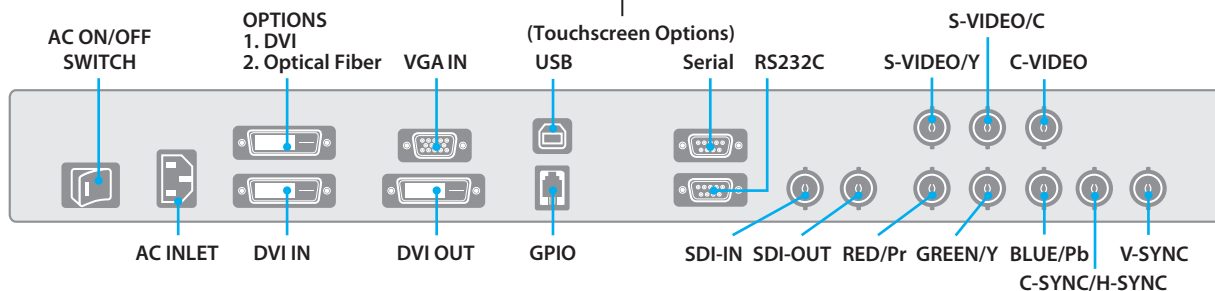
FS-L5501D is the ultimate in large screen medical grade displays. It is suitable for showing multiple images at sizes big enough to remain visible across the operating room. It is the largest display in FSN's medical line, and features LED backlighting, an internal power supply, and handheld remote.



### Accurate Color Reproduction



FSN has implemented methods to fine-tune the properties of our displays. Distinct color space settings have been calibrated to well-known surgical color preferences.



FSN displays have the connections you need. All major inputs are accepted via the back side connection panel.

## Specifications

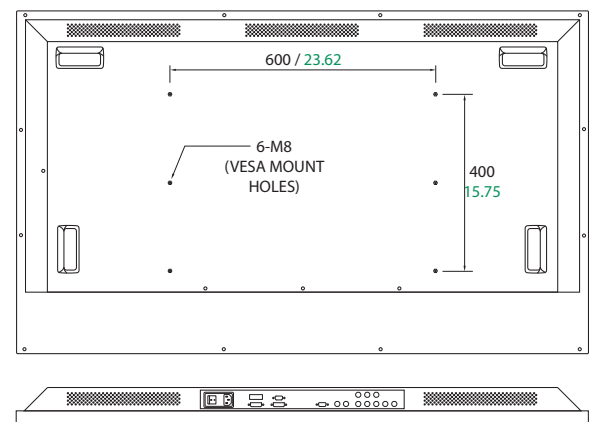
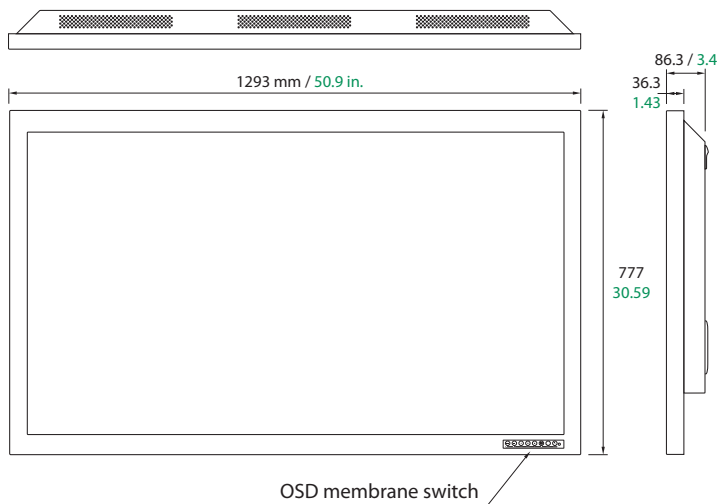


### General Features

Item	Description
Panel	55 inch TFT LCD (IPS)
Resolution	1920 x 1080 pixel
Aspect Ratio	16 : 9
Active Area	1209.6 X 680.4 mm
Input Signal	1 x DVI-D 1 1 x DVI-D 2 (optical fiber optional) 1 x VGA (D-sub) 1 x SD/HD/3G-SDI (BNC) 1 x C-Video (BNC) 2 x S-Video (Y/C) (BNC) 1 x Component (RGBS, YPbPr) (5 x BNC)
TOUCH (optional)	(Note: Depth and weight will increase)
GPIO port	Swap, PIP / PBP1 / PBP2 Select, Record indicator
Output Signal	1 x DVI & 1 x BNC (SDI)
Power Supply	AC 100~240V, 50/60 Hz, 3A Max
Control Key	Power, Menu, PIP, Up, Down, Plus, Minus, Input
Unit Dimension	1293(W) x 777(H) x 86.3(D) mm 50.9(W) x 30.59(H) x 3.4(D) inch
Average Brightness	450 (5 points avg.) cd/m2
Response Time (G-to-G)	9 ms (avg.)
Viewing Angle (CR>10)	R/L 178, U/D 178
Weight	37 kg, 81.57 lbs
Contrast Ratio	1300 : 1 typical
Pixel Pitch	0.630 x 0.630

### Signal Timing

Input Signal	Type	Description
VGA	Type	Analog RGB
	Connector	DSUB-15
	Level	0.7Vp-p ±5%
	Polarity	Positive
	Impedance	75 ohm ±5%
	Horizontal frequency	30 ~ 93KHz
	Vertical frequency	50 ~ 85Hz
	Applicable maximum pixel frequency	170MHz
	Type	Separate H/V sync, Composite H/V sync, Sync On Green Automatic synchronization without external switch
	Terminal resistance	more than 2KΩ
DVI	Type	Digital RGB
	Signal Format	TMDS single link
Optical DVI	Connector	DVI-D
	Type	Digital RGB
CVBS	Signal Format	Fiber Optic Transmission
	Type	C-Video
SVHS Y/C	Color system	NTSC, PAL
	Signal Format	Composite Video Signal
SDI	Type	S-Video
	Color system	NTSC, PAL
SDI	Signal Format	Y/C Separated Video Signal
		1080i (60 / 59.94 / 50)
	SMPTE-274M	1080p (30 / 29.97 / 25 / 24 / 24sF / 23.98 / 23.98sF)
	SMPTE-296M	720p (60 / 59.94 / 50)
	SMPTE-260M	1035i (60 / 59.94)
	SMPTE-125M	480i (59.94)
	ITU-R BT.656	576i (50)



Specifications are subject to change with or without notice. Doc.# FSN1932 Rev. 08/14

www.fsnmed.com

Foreseeson Custom Displays, Inc.  
2210 E. Winston Road  
Anaheim, CA 92806 USA  
Tel: 714-300-0540  
Fax: 714-300-0546

Fort Lee, New Jersey  
Tel: 201-849-4495  
Atlanta, Georgia  
Tel: 770-871-1895  
Orlando, Florida  
Tel: 407-667-3586

Foreseeson Korea  
404B, PangyoInnovalley B  
253 Pangyo-ro  
Bundang-gu Seongnam-si  
Gyeonggi-do, Korea 463-400  
Tel: +82-31-8018-0780  
Fax: +82-31-8018-0786

Foreseeson GmbH  
Industriestrasse 38a  
63150 Heusenstamm, Germany  
Tel: +49 6104 64398 0  
Fax: +49 6104 64398 11

Foreseeson UK Ltd.  
Unit 2 Kingsmill Business Park  
Chapel Mill Road  
Kingston upon Thames, Surrey KT1 3GZ  
Tel: +44 (0) 208 546 1047  
Fax: +44 (0) 208 546 3931