

SUPPORTED DEVICES/APPLICATIONS

SOURCE	APPLICATION
DVI, HD-SDI	HD Endoscopy, PACS, Vital Signs, Room Camera
HD-RGBS, HD-YP _b P _r	HD Endoscopy
RGBS, YP _b P _r , SDI	SD Endoscopy
S-Video, Composite	Fluoroscopy, SD Endoscopy, Ultrasound
VGA	PACS, Endoscopy, Ultrasound, Angiography

HIGH DEFINITION SURGICAL VISUALIZATION

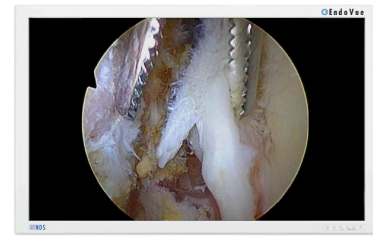


IMAGE PERFORMANCE

LCD Panel	Active Matrix TFT with IPS, LED Backlight
Refresh Rate	240Hz
Picture Size (H x W)	20.60 x 36.62 inches (523.26 x 930.24 mm)
Viewing Area (Diagonal)	42.02 inches (1067.31 mm)
Pixel Pitch	0.4845 mm
Resolution (H x W)	1920 x 1080 (WUXGA)
Luminance	450 cd/m ²
Contrast Ratio	1400:1
Aspect Ratio	16:9
Number of Colors	1.06 Billion
Color Gamut	100% (SMPTE 296M, HD Standard)
Viewing Angle	178°
Response Time	5-8 ms
Gamma	1.8, 2.0, 2.2, 2.4, 2.6, VIDEO, PACS (DICOM)

INPUTS

DVI	DVI-D
HD-SDI	BNC, 75 Ω
HD-RGBS, RGBS	DVI-I or HD-15, 0.7 Vp-p ± 6db, 75 Ω
HD-YP _b P _r / YP _b P _r	DVI-I or HD-15, 0.7 Vp-p ± 6db, 75 Ω
VGA	HD-15, 0.7 Vp-p ± 6db, 75 Ω
S-Video	DIN-4, 0.7 Vp-p +6/-3db, 75 Ω
Composite	BNC, 0.7 Vp-p +6/-3db, 75 Ω

CONNECTIVITY

OUTPUTS

DC Output	+5 VDC used for driving video fiber receiver
-----------	--

CONTROL INPUT

Serial Remote	D-sub 9pin, RS-232C
---------------	---------------------

GENERAL

Input Power Requirements	100 to 240 VAC ± 10%, 50/60 Hz
Power Consumption	140W (typical)
Dimensions (W x H x D)	39.7 x 23.6 x 3.5 inches (1008.3 x 599.4 x 88.9 mm)
Weight	51 lbs (23.13 Kg)
Temperature	Operating: 0 to +40°C (+32 to +104°F) Storage: -20 to +60°C (-4 to +140°F)
Humidity	Operating: 20 – 85% RH Storage: 10 – 90% RH
Mounting	100 x 100 mm, 300 x 100 mm - VESA

USER CONTROLS - ON-SCREEN MENU

Input Selection, Brightness, Contrast, Hue, Saturation, Gamma, Sharpness, RGB Gain, Backlight Level, Horizontal & Vertical Position, Phase, Frequency, DPMS, Auto-Source Select, Scaling, Overscan, Programmable User / Modality Settings Profiles

SUPPLIED / OPTIONAL ACCESSORIES

Supplied: Video Cables - S-Video, BNC, VGA, DVI, AC Cord, Product Documentation CD, Printed User Manual

COMPLIANCE & CERTIFICATIONS

UL 60601-1, EN 60601-1, EN 60601-1-2, FCC Part 15, MDD 93/42/EEC, CE, 2007/47/EC, CAN/CSA C22.2 NO. 601.1, Class 1 Medical Device, RoHS, WEEE

VIDEO INPUT FORMATS

Format	Input (Digital)	Input (Analog)	Horizontal Frequency (kHz)
576/50i (PAL)	SDI	Comp, S-Video, RGBS, YP _b P _r	15.625
480/60i (NTSC)	SDI	Comp, S-Video, RGBS, YP _b P _r	15.734
576/50p	DVI	RGBS, YP _b P _r	31.250
480/60p	DVI	RGBS, YP _b P _r	31.469
720/50p	HD-SDI, DVI	HD-RGBS, HD-YP _b P _r	37.500
720/60p	HD-SDI, DVI	HD-RGBS, HD-YP _b P _r	45.000
1080/50i	HD-SDI, DVI	HD-RGBS, HD-YP _b P _r	28.125
1080/60i	HD-SDI, DVI	HD-RGBS, HD-YP _b P _r	33.750
1080/50p	DVI	--	56.2
1080/60p	DVI	--	67.3

INPUT / OUTPUT CONNECTOR PANEL

